

AK-HOI  
TONKIN

The Ak-Hoi post office opened in 1890 and stayed in operation until approximately 1952. When it opened, the French Expeditionary Corps serving in combat zones had free mail privileges as this mailing to Paris in 1896 exemplifies.



POSTMARK TYPE: D2  
PERIOD OF USE: 1895-1904



POSTAL MARKINGS  
CORPS EXPED<sup>RE</sup> TONKIN.  
AK-HOI TONKIN 29 AOUT 96  
REVERSE  
HAIPHONG TONKIN 2 SEPT 96  
PARIS R. DES BATTION...S 1 OCT 96

# AK-HOI TONKIN

Ak-Hoi's type D2 postmark remained in service for a decade. The last year of use of the D2 postmark was 1904.



POSTMARK TYPE: D2  
PERIOD OF USE: 1895-1904

POSTAL MARKINGS  
AK-HOI TONKIN 15 MARS 04

## ACKOI TONKIN

The Ak-Hoi post office also used the spelling “ACKOI” for its type E2 postmark. The E2 postmark was in service for nearly a quarter century until the town’s name became Ha-Coi in 1929.



POSTMARK TYPE: E2  
PERIOD OF USE: 1906-29



POSTAL MARKINGS  
ACKHOI TONKIN 5 MARS 09  
REVERSE  
MON-CAY TONKIN 7 MARS 09

BACKAN S/ SONG-CAU  
TONKIN

The Backan post office opened in 1897 and continued operations until 1946. Its first postmark was in the D1 format and was the only postmark that ever employed the "BACKAN S/ SON-CAU" spelling with the hyphenated "SONG-CAU."



POSTMARK TYPE: D1  
PERIOD OF USE: 1897-1906



POSTAL MARKINGS  
CORPS EXPRE TONKIN  
BACKAN S/ SONG-CAU TONKIN 8 JUN 02  
REVERSE  
CHO-MOI TONKIN 9 JUN 02  
BAC-NINH TONKIN 11 JUN 02

# BACKAN S/ SONG-CAU TONKIN

The variation that used the “BACKAN S/ SON-CAU” spelling was in service for a decade. This example from 1906 is the latest reported use of the type D1 postmark.



POSTMARK TYPE: D1  
PERIOD OF USE: 1897-1906



POSTAL MARKINGS  
BACKAN S/ SONG-CAU TONKIN 20 MARS 06

## BACKAN S/ SONGCAU TONKIN

The only postmarks that used the “BACKAN s/ SONGCAU” spelling without a hyphen in “SONGCAU” was the type E2 device. Its final year of use was 1912.



POSTMARK TYPE: E2  
PERIOD OF USE: 1908-12



### POSTAL MARKINGS

NGUYEN-BINH TONKIN 30 JUIN 12  
CAO BANG TONKIN 1 JUL 12  
NGAN SON TONKIN 4 JUL 12  
BACKAN S/ SONGCAU TONKIN 5 JUL 12

### REVERSE

NGUYEN-BINH TONKIN 30 JUIN 12  
CHO-CHU TONKIN 10 JUL 12

BACKAN  
TONKIN

Unlike many other towns in Tonkin, Backan never had a type E2 postmark. It did have a type E2(ch) postmark, which was in service for over a decade.



POSTMARK TYPE: E2(ch)  
PERIOD OF USE: 1915-28

POSTAL MARKINGS  
BACKAN TONKIN 16-4 24  
framed R with manuscript registration number

REVERSE  
HANOI TONKIN 17-4 24

BACKAN  
TONKIN

The last postmark that employed the simple "BACKAN" spelling was a type G device. It was in use for over two decades.



POSTMARK TYPE: G  
PERIOD OF USE: 1927-40



POSTAL MARKINGS  
BACKAN TONKIN 8-4 38  
REVERSE  
HA NOI R. P. TONKIN 8-4 38

## BAC-LE TONKIN

The Bac-Le post office opened in 1894 and closed 1 April 1932. Bac-Le kept its type E2 postmark in service for two decades.



POSTMARK TYPE: E2  
PERIOD OF USE: 1896-1917



POSTAL MARKINGS  
BAC-LE TONKIN 18 MAI 09  
COLLONGES AU MONT D'OR 26-6 09

## BAC-ME TONKIN

The Bac-Me post office opened in 1898 and closed in 1909. Bac-Le's only postmark was a type D1 device. Here the D1 postmark was applied to an Expeditionary Corps letter to Rouen in 1899.



POSTMARK TYPE: D1  
PERIOD OF USE: 1898-1906



### POSTAL MARKINGS

TONKIN CORPS EXPEDITRE  
BAC-ME TONKIN 16 AVRIL 99  
BAO-LAC TONKIN 18 AVRIL 99

### REVERSE

CAOBANG TONKIN 21 AVRIL 99  
LANG-SON TONKIN 24 AVRIL 99  
HAIPHONG TONKIN 25 AVRIL 99  
ROUEN SEINE M<sup>ME</sup> 4 JUIN 99

## BAC-ME TONKIN

The Bac-Me post office was open for a little longer than a decade. Its only recorded postmark is a type D1 device. This example from 1906 is the latest known example of the postmark.



POSTMARK TYPE: D1  
PERIOD OF USE: 1898-1906

POSTAL MARKINGS  
BAC-ME TONKIN 8 MAI 06

## BAC-NINH TONKIN

The military post office at Bac-Ninh opened in 1884. Its first postmark was a type B1 format that remained in service for over two decades. Here it was applied to an Expeditionary Corps mailing to Lyon during its first year. The post office opened to civilian users starting on 1 January 1885.



POSTMARK TYPE: B1  
PERIOD OF USE: 1884-1907



### POSTAL MARKINGS

BAC-NINH TONKIN 18 OCT. 84 (red)

REVERSE

TONQUIN HA-NOI 19 OCT. 84  
MARSEILLE A LYON SPECIAL 6 DEC. 84  
LYON RHONE 6 DEC. 84

BAC-NINH  
TONKIN

Bac-Ninh's post office used both hyphenated, "BAC-NINH," and non-hyphenated "BACNINH" spellings. The postmark was applied to this envelope posted by a member of the Tonkin Expeditionary Corps through the military postal system.



POSTMARK TYPE: D1  
PERIOD OF USE: 1896-1912



POSTAL MARKINGS  
BAC-NINH TONKIN 31 OCT 99  
CORPS EXPEDIT<sup>RE</sup> TONKIN

## BAC-NINH TONKIN

Bac-Ninh's long-lived type D2 postmark was in use for a quarter of a century. Normally, a red stripe envelope meant that the address was expressed with Chinese text. However, French was used in the case of this letter to France in 1909.



POSTMARK TYPE: D2  
PERIOD OF USE: 1898-1923



POSTAL MARKINGS  
BAC-NINH TONKIN 17 FEVR 09

BAC-NINH  
TONKIN

The type E2(ch) postmark was the first to use the hyphenated "BAC-NINH" spelling. The town never had a type E2 postmark with either spelling variation.



POSTMARK TYPE: E2(ch)  
PERIOD OF USE: 1913-28



POSTAL MARKINGS  
BAC-NINH TONKIN 30-12 24  
REVERSE  
HANOI TONKIN 30-12 24

BAC-NINH  
TONKIN

With its post office closing in 1946, Bac-Ninh's final postmark was a type G device.



POSTMARK TYPE: G  
PERIOD OF USE: 1928-45



POSTAL MARKINGS

BAC-NINH TONKIN 15-6 34  
registration label

REVERSE

HAI-PHONG TONKIN 18-6 34  
CASTRES TARN 20-7 34

# BAC-QUANG TONKIN

The Bac-Quang post office opened in 1897. The first reported postmark for Bac-Quang was a type D1 device. It remained in service for over a decade.



POSTMARK TYPE: D1  
PERIOD OF USE: 1900-13



## POSTAL MARKINGS

BAC-QUANG TONKIN 11 JANV 06  
TUYEN-QUANG TONKIN 14 JANV 06

## REVERSE

HOANG-THU-BI TONKIN 9 JANV 06

# BAC-QUANG TONKIN

At the turn of the century, many post offices abandoned the practice of representing the year with two digits. As in the case of this D1 postmark from Bac-Quang, four digits were used to celebrate the arrival of the new century.



POSTMARK TYPE: D1  
PERIOD OF USE: 1900-13



## POSTAL MARKINGS

CORPS EXPEDIT<sup>RE</sup> TONKIN  
BAC-QUANG TONKIN 7 OCT 1900

## REVERSE

TUYEN-QUANG TONKIN 12 OCT 1900  
HANOI TONKIN 15 OCT 1900  
NIEPPE NORD 22 NOV 00  
REIMS MARNE 24 NOV 00

BACQUANG  
TONKIN

The only postmark that ever used the non-hyphenated "BACQUANG" spelling was a type E2 device.



POSTMARK TYPE: E2  
PERIOD OF USE: 1921-27



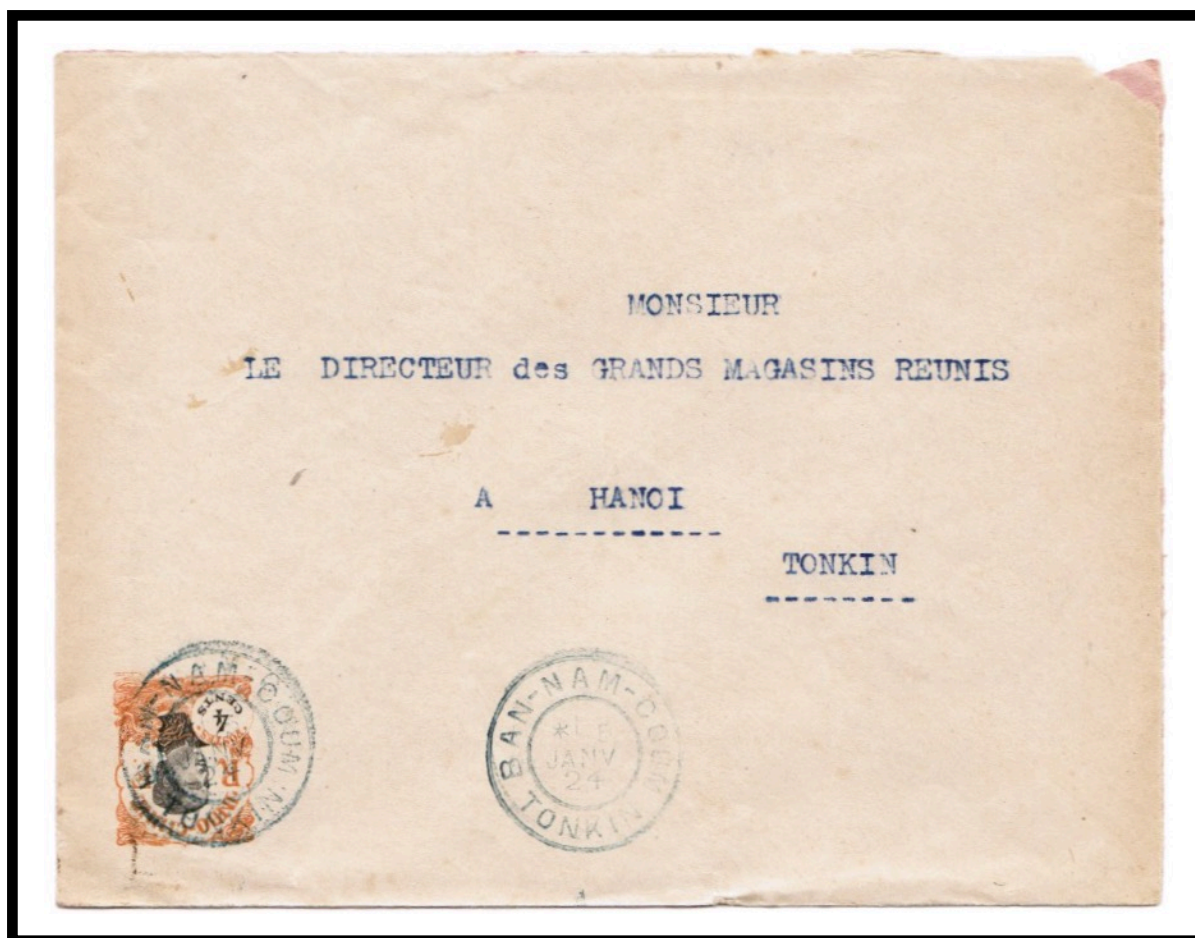
POSTAL MARKINGS  
BACQUANG TONKIN 24 FEVR 24  
REVERSE  
TUYENQUANG TONKIN 2(?) FEVR 24

## BAN-NAM-COUN TONKIN

Ban-Nam-Coun was a small village in Laokay Province near the Chinese border. Its post office was established in 1915 and its first recorded postmark was a type E1 device. The earliest known year for Ban-Nam-Coun's type E1 postmark is 1924.



POSTMARK TYPE: E1  
PERIOD OF USE: 1924-27



POSTAL MARKINGS  
BAN-NAM-QUAN TONKIN 5 JANV 24 (blue)  
REVERSE  
PHONG-THO TONKIN 5 JANV 24  
LAOKAY TONKIN 5 JANV 24  
HANOI TONKIN 9-1 24

## BAN-NAM-COUN TONKIN

Ban-Nam-Coun was a small village in Laokay Province near the Chinese border.  
The earliest known year for its type G postmark is 1929.



POSTMARK TYPE: G  
PERIOD OF USE: 1929-42



### POSTAL MARKINGS

BAN-NAM-COUN TONKIN 2-11-29

HA-NOI R.P. TONKIN 17-11-29

flight cachet

expedited service label

### REVERSE

PARIS R.P. DISTRIBUTION 21 • XI 1929

## BAN-YEN-NHAM TONKIN

The post office at Ban-Yen-Nham opened in 1904. Its first postmark was a type D1(t) device that, in a departure from the usual format, incorporated dashes that separated the town name from the name of the protectorate.



POSTMARK TYPE: D1(t)  
PERIOD OF USE: 1904-26



POSTAL MARKINGS  
BAN-YEN-NHAM TONKIN 8 DEC 05

BAN-YEN-NHAN  
TONKIN

The last postmark style known for Ban-Yen-Nhan was a type G format.



POSTMARK TYPE: G  
PERIOD OF USE: 1927-43



POSTAL MARKINGS  
BAN-YEN-NHAN TONKIN 21-2 37  
REVERSE  
HANOI R.P. TONKIN 21-2 37

# BAN-YEN-NHAN TONKIN

The last postmark known from Ban-Yen-Nhan was the type G format. The post office there closed around 1953.



POSTMARK TYPE: G  
PERIOD OF USE: 1927-43



POSTAL MARKINGS  
BAN-YEN-NHAN TONKIN 3-4 38

BAOHA  
TONKIN

Baoha's first postmark with the unhyphenated "BAOHA" spelling was a type E2 device. This postmark remained in service for nearly three decades.



POSTMARK TYPE: E2  
PERIOD OF USE: 1900-28



POSTAL MARKINGS  
CORPS EXPEDITIONNAIRE TONKIN  
BAOHA TONKIN 3 DEC 02  
REVERSE  
HA NOI TONKIN 8 DEC 02  
BRUYERES-EN-VOSGES VOSGES 12 JANV 03

BA-HOA  
TONKIN

“BA-HOA” was a misspelling of “BAOHA.” Despite the error, the postmark remained in service for a decade.



POSTMARK TYPE: D2  
PERIOD OF USE: 1888-98



POSTAL MARKINGS  
BA-HOA TONKIN 5 MAI 94  
REVERSE  
YENBAY TONKIN 6 MAI 94

BAOHA  
TONKIN

The Baoha post office opened in 1886 and closed in 1946. Baoha's long-lived type E2 postmark was in service for nearly three decades. Here the d1 postmark was struck on an Expeditionary Corps letter addressed to someone associated with "Equipements Militaire."



POSTMARK TYPE: E2  
PERIOD OF USE: 1900-28



POSTAL MARKINGS  
BAOHA TONKIN 8 MARS 04  
REVERSE  
YENBAY TONKIN 11 MARS (0)4  
HANOI TONKIN 15 MARS 04  
10 PARIS 10 DISTRIBUTION 20-4 04

BAOHA  
TONKIN

The final year for Baotha's type E2(ch) postmark with the month given numerically was 1924. Later postmarks employed the hyphenated spelling "BAO-HA."



POSTMARK TYPE: E2(ch)  
PERIOD OF USE: 1913-24



POSTAL MARKINGS  
BAOHA TONKIN 7-1 24  
REVERSE  
HA NOI TONKIN 8-1 24

BAO-HA  
TONKIN

The last postmark known from Bao-Ha was the type G postmark. The Bao-Ha post office closed in 1946.



POSTMARK TYPE: G  
PERIOD OF USE: 1938-40



POSTAL MARKINGS  
BAO-HA TONKIN 20-2 40  
REVERSE  
HANOI R.P. <sup>BIS</sup> TONKIN 20-2 40

BAO-LAC  
TONKIN

Established in 1897, the civilian post office at Bao-Lac initially used a type D1 postmark through 1907. Struck with the blue cachet of "LE CHEF DE BATAILLON — LE COMMANDANT — BAO-LAC," this cover was postmarked when it entered the civilian mail system.



POSTMARK TYPE: D1  
PERIOD OF USE: 1898-1907



POSTAL MARKINGS  
CORPS EXPEDRE TONKIN  
BAO-LAC TONKIN 6 DEC 01  
REVERSE  
CAO-BANG TONKIN 11 DEC. 01  
LANG-SON TONKIN 13 DEC. 01  
RAMBOUILLET SEINE-ET-OISE 27-1 02

BAO-LAC  
TONKIN

Type G postmarks employed both the hyphenated and non-hyphenated spellings. The "BAO-LAC" variety was the last reported postmark for the post office which closed in 1946.



POSTMARK TYPE: G  
PERIOD OF USE: 1927-43



POSTAL MARKINGS  
BAO-LAC TONKIN 16-12 39  
REVERSE  
HA NOI R.P. <sup>BIS</sup> TONKIN 19-12 39

BAO-LAC  
TONKIN

The type G postmark was the last to use the hyphenated spelling "BAO-LAC."  
Here the postmark was struck with blue ink.



POSTMARK TYPE: G  
PERIOD OF USE: 1927-43



POSTAL MARKINGS

BAO-LAC TONKIN 12-9 31

REVERSE

HAI-PHONG TONKIN 13-9 31

CAO-BANG TONKIN 15-9 31

BESANCON R.P. DOUBS 18 • X 1931

BAOLAC  
TONKIN

The first postmark with the unhyphenated "BAOLAC" spelling was a type F2 device. Its first known use was in 1908.



POSTMARK TYPE: F2  
PERIOD OF USE: 1908-11



POSTAL MARKINGS  
BAOLAC TONKIN 3 DEC 02  
BIARRITZ B<sup>SES</sup> PYRENEES 4-11 08

BAOLAC  
TONKIN

The last postmark that used the non-hyphenated "BAOLAC" spelling was a type G device. This postmark first entered service in 1924



POSTMARK TYPE: G  
PERIOD OF USE: 1924-30



POSTAL MARKINGS  
BAOLAC TONKIN 3-1 24  
REVERSE  
CAOBANG TONKIN 5-1 24  
HA NOI TONKIN 7-1 24

BAXAT  
TONKIN

When it opened in 1900, the Baxat post office put into service a type E1 postmark format, which was its very first postmarking device.



POSTMARK TYPE: E1  
PERIOD OF USE: 1900-23



POSTAL MARKINGS

BAXAT TONKIN 26 MAI 04

LAO-KAI TONKIN 25 MAI 04

REVERSE

BAXAT TONKIN 26 MAI 04

BI-NHI  
TONKIN

The Bi-Nhi post office opened in 1897 and closed in 1932. Its first postmark was the type D1 format. Here it was struck with purple ink.



POSTMARK TYPE: D1  
PERIOD OF USE: 1900-07



POSTAL MARKINGS

BI-NHI TONKIN 14 MARS 10 (purple)

LAM TONKIN 19 MARS 10

REVERSE

BI-NHI TONKIN 14 MARS 10 (purple)

BINHLIEU  
TONKIN

Binhlieu's unusual type E3 device, with 23 dashes comprising the inner circle was last used in 1935.



POSTMARK TYPE: E3(23t)  
PERIOD OF USE: 1915-35



POSTAL MARKINGS

BINHLIEU TONKIN 3 JUL 35

REVERSE

TIEN-YEN TONKIN 3-7 35

HAIPHONG TONKIN 5-7 35

HANOI R.P. TONKIN 5 JUL 35

MARSEILLE-GARE-AVION B<sup>CHES</sup> DU RHONE 14 • VII 1935

# BINH-LIEU TONKIN

Binh-Lieu's type G postmark, the last recorded from this town, is only known used in 1940.



POSTMARK TYPE: G  
PERIOD OF USE: 1940



## POSTAL MARKINGS

BINH-LIEU TONKIN 3-4 40  
plain R with manuscript registration number

## REVERSE

TIEN-YEN TONKIN 3-4 40  
HAI-PHONG TONKIN 5-4 40

BUI-CHU  
VIET-NAM

Bul-Chi's only recorded postmark was a type W2 device. This example is the earliest known use of the type W2 postmark.



POSTMARK TYPE: W2  
PERIOD OF USE: 1951-53



POSTAL MARKINGS  
BUI-CHU VIET-NAM 22-6 1951  
REVERSE  
BUI-CHU VIET-NAM 22-6 1951  
HA NOI VIET-NAM 20-6 1951

## CAMPHA-MINE TONKIN

The coal mine at Campha so dominated the local economy that it warranted its own post office. The type G postmark was in use for two decades.



POSTMARK TYPE: G  
PERIOD OF USE: 1925-44



POSTAL MARKINGS  
CAMPHA-MINE TONKIN 21-11 39  
REVERSE  
HAIPHONG TONKIN 22-11 39

## CAMPHA-MINE TONKIN

Postal clerks usually applied markings with black ink. In the case of this 1927 mailing from Campha-Mine to Hanoi, the clerk applied the postmarks and the registration indicator with blue ink.



POSTMARK TYPE: G  
PERIOD OF USE: 1925-44



POSTAL MARKINGS  
CAMPHA-MINE TONKIN 25-2 27 (blue)  
framed R (blue) with manuscript registration number  
REVERSE  
HANOI TONKIN 27-2 27

CAMPHAMINES  
NORD VIET NAM

The only postmark that ever presented the  
single-word, non-hyphenated spelling  
"CAMPHAMINES" was a type V format.



POSTMARK TYPE: V  
PERIOD OF USE: 1949-54



POSTAL MARKINGS  
CAMPHAMINES NORD VIET NAM 9-1 1950  
REVERSE  
HAIPHONG NORD VIET NAM 12-1 1950

## CAMPHA PORT TONKIN

The type G postmark with the non-hyphenated spelling "CAMPHA PORT" was introduced after the hyphenated version.



POSTMARK TYPE: G  
PERIOD OF USE: 1935-38



POSTAL MARKINGS  
CAMPHA PORT TONKIN 10-2 37  
REVERSE  
HANOI R.P. TONKIN 13-2 37

## CAMPHA PORT NORD VIET NAM

Campha Port's last postmark employed the non-hyphenated "CAMPHA PORT" spelling and was a type V device. It first appeared in 1950 and disappeared in 1953.



POSTMARK TYPE: V  
PERIOD OF USE: 1950-53



### POSTAL MARKINGS

CAMPHA PORT NORD VIET NAM 1612 1950  
airmail and registry labels

CAM-PHA-REN  
VIET-NAM

"CAM-PHA-REN" was not a previously known town name. This example is the "discovery cover."



POSTMARK TYPE: W  
PERIOD OF USE: 1951



POSTAL MARKINGS  
CAM-PHA-REN VIET-NAM 17-4 1951  
REVERSE  
HAI-PHONG VIET-NAM 18-4 1951

CAMKHE  
TONKIN

The post office at Camkhe was operating during from approximately 1888 to approximately 1902. Camkhe's type D2 postmark is Camkhe's only known postmark format.



POSTMARK TYPE: D2  
PERIOD OF USE: 1888-1901



POSTAL MARKINGS

CAMKHE TONKIN 14 AOUT 96  
CORPS EXPRE ANNAM-TONKIN

REVERSE

HANOI TONKIN 16 AOUT 96  
PARIS DISTRIBUTION 15 SEPT 96

## CAO-BANG TONKIN

The civilian post office was established at Cao-Bang in 1888. The first postmark was a type B1 device. Here the civilian postmark was struck on a post-free letter from a member of the Annam-Tonkin Expeditionary Corps in 1892.



POSTMARK TYPE: B1  
PERIOD OF USE: 1888-1908



### POSTAL MARKINGS

TONKIN CORPS EXPEDIT<sup>RE</sup>  
CAOBANG TONKIN 6 AOUT 92

### REVERSE

HAIPHONG TONKIN 16 AOUT 92  
MARSEILLE DEPART 23 SEPT 92  
CONFOLENS CHARENTE 24 SEPT 92  
CAMPAGNE MOUTON CHARENTE 24 SEPT 92  
CAMPAGNE MOUTON CHARENTE 26 SEPT 92

## CAO-BANG TONKIN

The opening of the Cao-Bang post office was announced on 23 February 1888. Its first postmark was a type B1 device and this example is the earliest known use of a type B1 postmark from Cao-Bang.



POSTMARK TYPE: B1  
PERIOD OF USE: 1888-1908



### POSTAL MARKINGS

CORPS EXP<sup>RE</sup> ANNAM-TONKIN  
CAO-BANG TONKIN 24 AVRIL 88  
CORPS EXP. TONKIN LIGNE N. 8 14 MAI 88 (red)

### REVERSE

THATKHE TONKIN 25 AVRIL 88  
NA-CHAM TONKIN 27 AVRIL 88  
LANG-SON TONKIN 28 AVRIL 88  
THANH-MOI TONKIN 29 AVRIL 88  
LANG-KEP TONKIN 1 MAI 88  
PHU-LANG-THUONG TONKIN () MAI 88  
AUBENTON AISNE 13 JUIN 88

CAOBANG  
TONKIN

Caobang's type E2 postmark survived for 35 years of service from 1894 through 1929.



POSTMARK TYPE: E2  
PERIOD OF USE: 1894-1929



POSTAL MARKINGS  
CAOBANG TONKIN 29 JUIN 11  
BI-NHI TONKIN 2 JUIL 11

CAO-BANG  
TONKIN

Designating the month by a numeral in the type E2 postmark was common practice for the Cao-Bang post office. This date stamp was in service at the same time as the type E2 postmark with the month specified by an abbreviation.



POSTMARK TYPE: E2(ch)  
PERIOD OF USE: 1916-22



POSTAL MARKINGS  
CAO-BANG TONKIN 16-8 13

CAO-BANG  
TONKIN

Both hyphenated and non-hyphenated spellings were utilized in contemporary type G postmarks.



POSTMARK TYPE: G  
PERIOD OF USE: 1929-43



POSTAL MARKINGS  
CAO-BANG TONKIN 22-7 36  
REVERSE  
HANOI R.P. TONKIN 23-7 36  
PARIS R.P. DISTRIBUTION 3 • VIII 1936

CAOBANG  
TONKIN

The last postmark that used the non-hyphenated "CAOBANG" spelling was a type G device. In service for two decades, the earliest known use dates from 1923.



POSTMARK TYPE: G  
PERIOD OF USE: 1923-42



POSTAL MARKINGS  
CAOBANG TONKIN 30-1 23  
REVERSE  
HANOI TONKIN 2-12 23

CAUDO  
TONKIN

Although the Caudo post office opened in 1899, only a single postmark has been reported from Caudo. Effective 15 April 1905, the post office closed when operations were transferred to Hadong.



POSTMARK TYPE: E1  
PERIOD OF USE: 1901-04



POSTAL MARKINGS  
CAUDO TONKIN 29 NOV 03  
REVERSE  
HANOI TONKIN 29 NOV 03  
ARGENTAN ORNE 6-1 04

CHAPA  
TONKIN

Opening in July 1913, the type E2 postmark was almost certainly the first postmark put into service by the post office at Chapa.



POSTMARK TYPE: E2  
PERIOD OF USE: 1914-29



POSTAL MARKINGS  
CHAPA TONKIN 28 JUL 22

CHAPA  
TONKIN

Being a resort area in Tonkin, Chapa's post office was active for only several months each year.



POSTMARK TYPE: G  
PERIOD OF USE: 1923-44



POSTAL MARKINGS

CHAPA TONKIN 26-5 38

REVERSE

MARSEILLE-GARE-AVION B<sup>CHES</sup> DU RHONE II • VI 1938  
TOULON S/ MER VAR 2 • VI 1938

CHAPA  
TONKIN

Postmarks employing the hyphenated and non-hyphenated spellings coexisted during the period 1923-44.



POSTMARK TYPE: G  
PERIOD OF USE: 1923-44



POSTAL MARKINGS  
CHA-PA TONKIN 13-11 36  
registration label  
REVERSE  
HANOI R.P. TONKIN 14-11 36

## CHANG-POUNG TONKIN

The only recorded postmark for Chang-Poung, which was open from 21 March 1917 through 1946, was a type E1 device.



POSTMARK TYPE: E1  
PERIOD OF USE: 1933-38



### POSTAL MARKINGS

CHANG-POUNG TONKIN 28 JUIL 33  
plain R with manuscript registration number  
airmail label  
framed Saigon-Marseille route handstamp

### REVERSE

DONG-VAN TONKIN 28-7 33  
HA-GIANG TONKIN 2-8 33

CHIMA  
TONKIN

Although the post office at Chima operated from 1914 through 1932, its first recorded postmark was a type E1 device in 1926. The short-lived postmark is only known from a period of two years.



POSTMARK TYPE: E1  
PERIOD OF USE: 1926-27

POSTAL MARKINGS  
CHIMA TONKIN 28 JANV 24  
plain R with manuscript registration number

REVERSE

LANG-SON TONKIN  
HANOI TONKIN 9-1 23

## CHIMA TONKIN

The post office at Chima operated from 1914 through 1932. One of its first postmarks was a type E1 device. This example from the last day of 1923 represents the earliest recorded use of the type E1 format.



POSTMARK TYPE: E1  
PERIOD OF USE: 1923-27



POSTAL MARKINGS  
CHIMA TONKIN 31 DEC 23  
REVERSE  
LANG-SON TONKIN 1-1 24

CHIAMHOA  
TONKIN

Only a single postmark style, the E1 format, employed the non-hyphenated "CHIAMHOA" spelling. The post office at Chiamhoa opened in 1915 and the E1 device was Chiamhoa's first postmark.



POSTMARK TYPE: E1  
PERIOD OF USE: 1917-30



POSTAL MARKINGS  
CHIAMHOA TONKIN 12 DEC 22  
REVERSE  
HAIPHONG TONKIN 13-12 22  
HONG-KONG 30 DEC 22

CHINE  
TONKIN

The French word for "China" is "Chine." The first postmark for the Tonkinese town of "CHINE" was a type E2 with the month designated by a numeral.



POSTMARK TYPE: E2(ch)  
PERIOD OF USE: 1915-29



POSTAL MARKINGS

CHINE TONKIN 26-3 26

REVERSE

PHU-LY TONKIN 26-3 26

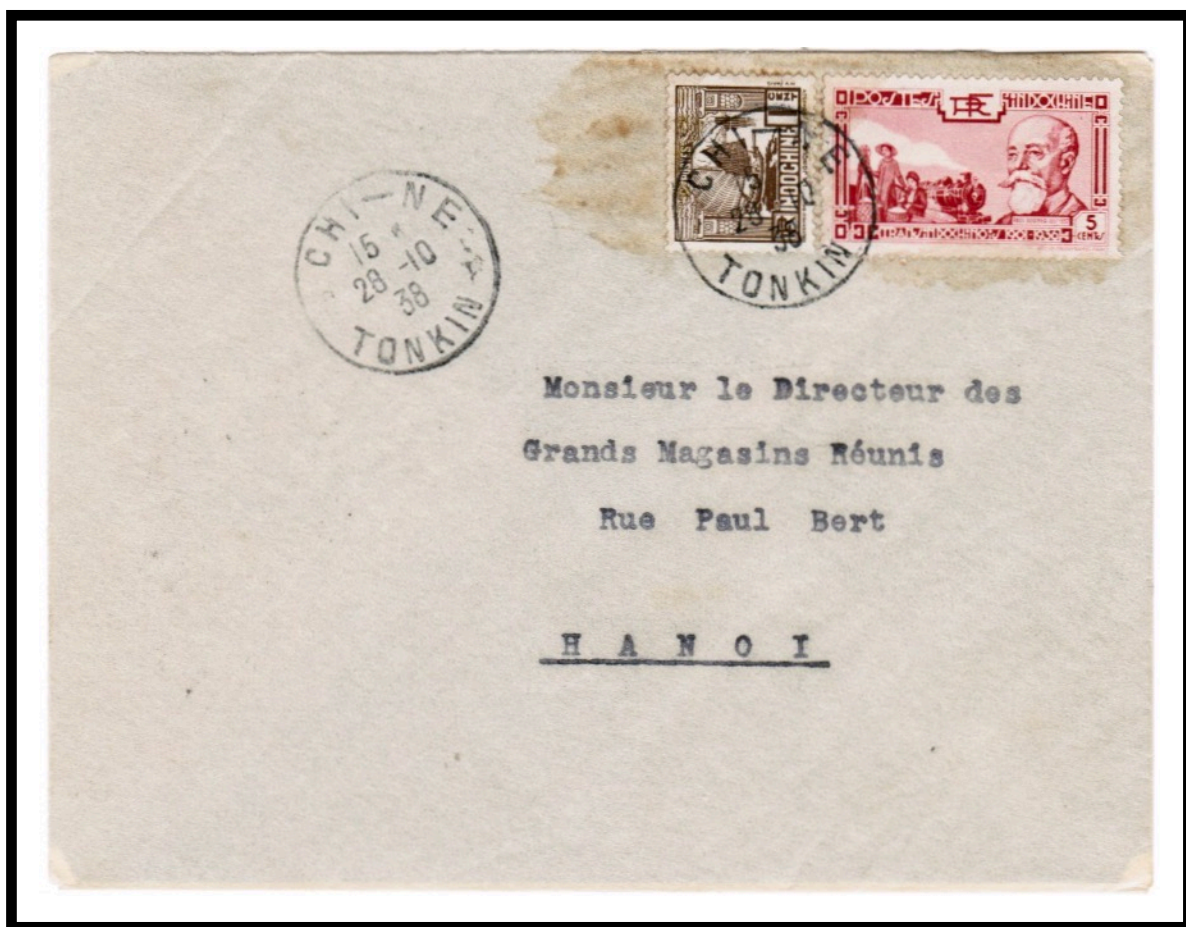
HANOI TONKIN 26-3 26

CHI-NE  
TONKIN

The only postmark that ever employed the hyphenated "CHI-NE" spelling was a type G device.



POSTMARK TYPE: G  
PERIOD OF USE: 1929-43



POSTAL MARKINGS  
CHI-NE TONKIN 28-10 38  
REVERSE  
HANOI R.P. TONKIN 28-10 38

CHO-CHU  
TONKIN

The first postmark with the hyphenated "CHO-CHU" spelling was a type E2 device.  
Cho-Chu's type E2 postmark was in service for two decades.



POSTMARK TYPE: E2  
PERIOD OF USE: 1906-25



POSTAL MARKINGS  
CHO-CHU TONKIN 15 NOV. 23  
REVERSE  
CHO-CHU TONKIN 15 NOV. 23  
THAINGUYEN TONKIN 15 NOV 23

# CHO-DIEN TONKIN

The Cho-Dien post office opened on 20 June 1925. The only known postmark format for Cho-Dien is the type G device, which is first recorded in 1926.



POSTMARK TYPE: G  
PERIOD OF USE: 1926-45



POSTAL MARKINGS  
CHO-DIEN TONKIN 18-7-26

# CHO-DIEN TONKIN

The only postmark recorded for Cho-Dien was a type G device. The postmark remained in service for two decades.



POSTMARK TYPE: G  
PERIOD OF USE: 1926-45

POSTAL MARKINGS  
CHO-DIEN TONKIN 20-8 42  
REVERSE  
TUYEN-QUANG TONKIN 23-8 42  
HANOI R.P. BIS TONKIN 25-8 42

CHO-GANH  
TONKIN

Having a rural status before 28 September 1921, the Cho-Ganh post office reverted to a rural post office after 1 April 1932. The only postmark used by Cho-Ganh when it was a secondary post office was a type G device.



POSTMARK TYPE: G  
PERIOD OF USE: 1929-39



POSTAL MARKINGS  
CHO-GANH TONKIN 18-6 25  
REVERSE  
HANOI TONKIN 18-6 25

CHO-MOI  
TONKIN

Cho-Moi was a town in Backan Province. Its first postmark, a type E2 device, remained in service for over two decades.



POSTMARK TYPE: E2  
PERIOD OF USE: 1895-1918



POSTAL MARKINGS

CHO-MOI TONKIN 30 MAI 97  
CORPS EXPRE TONKIN

REVERSE

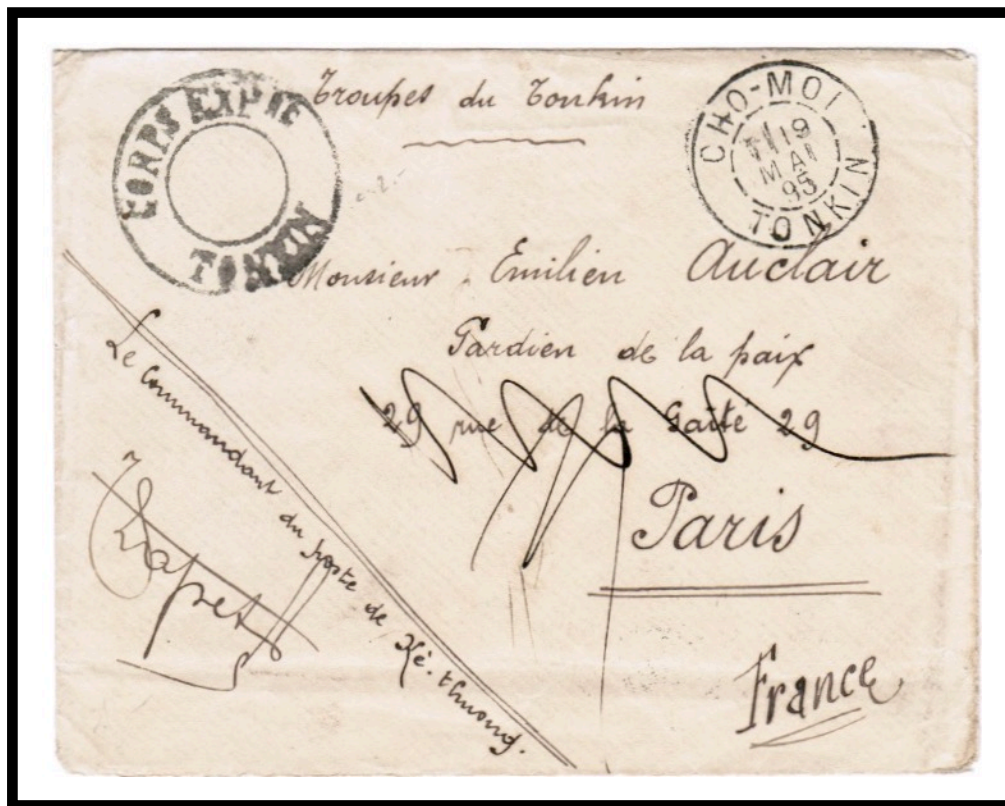
HANOI TONKIN 2 JUIN 97  
HAIPHONG TONKIN 3 JUIN 97  
MARSEILLE DEPART 8 JUIL 97  
LANCON BOUCHES-DU-RHONE 8 JUIL 97

CHO-MOI  
TONKIN

The Cho-Moi post office opened on 20 April 1895. This letter was posted one month after the opening and represents the earliest known use of Cho-Moi's E2 postmark.



POSTMARK TYPE: E2  
PERIOD OF USE: 1895-1918



POSTAL MARKINGS

CHO-MOI TONKIN 19 MAI 95  
CORPS EXPRE TONKIN

REVERSE

TAHI-NGUYEN TONKIN 20 MAI 95  
BAC-NINH TONKIN 21 MAI 95  
HANOI TONKIN 22 MAI 95

## OHO-MOI TONKIN

For two years, the post office at Cho-Moi kept in service a type E1 postmark with the spelling error "OHO-MOI." A type E2 postmark with the correct spelling was in service over the same period (1895-1918).



POSTMARK TYPE: E1  
PERIOD OF USE: 1904-05



POSTAL MARKINGS  
OHO-MOI TONKIN 20 JANV 05

CHORA  
TONKIN

Opened in 1906, the first postmark for Chora's secondary post office was a type E2 postmark.



POSTMARK TYPE: E2  
PERIOD OF USE: 1908-29



POSTAL MARKINGS  
CHORA TONKIN 4 NOV 26  
REVERSE  
BACKAN TONKIN 5-11 26  
HANOI TONKIN 6-11 26

CHO-RA  
TONKIN

The only postmark that employed the hyphenated "CHO-RA" spelling was a type G device. It remained in service for a decade. The Cho-Ra post office closed in 1946.



POSTMARK TYPE: G  
PERIOD OF USE: 1931-42



POSTAL MARKINGS

CHO-RA TONKIN 16-3 32

REVERSE

NGAN-SON TONKIN 16-3 32

HANOI R.P. TONKIN 17-3 32

PARIS XX DISTRIBUTION 23 • IV 1932

CHU  
TONKIN

The post office at Chu was transferred from Lam and began operations on 16 September 1929. Chu's first postmark was a type G device.



POSTMARK TYPE: G  
PERIOD OF USE: 1929-38



POSTAL MARKINGS

CHU TONKIN 10-4 36  
airmail label  
registration label

REVERSE

HANOI R.P. TONKIN 10-4 36  
ROCHEFORT-DU-MER CHARENTE INFIREUR 20-4 36